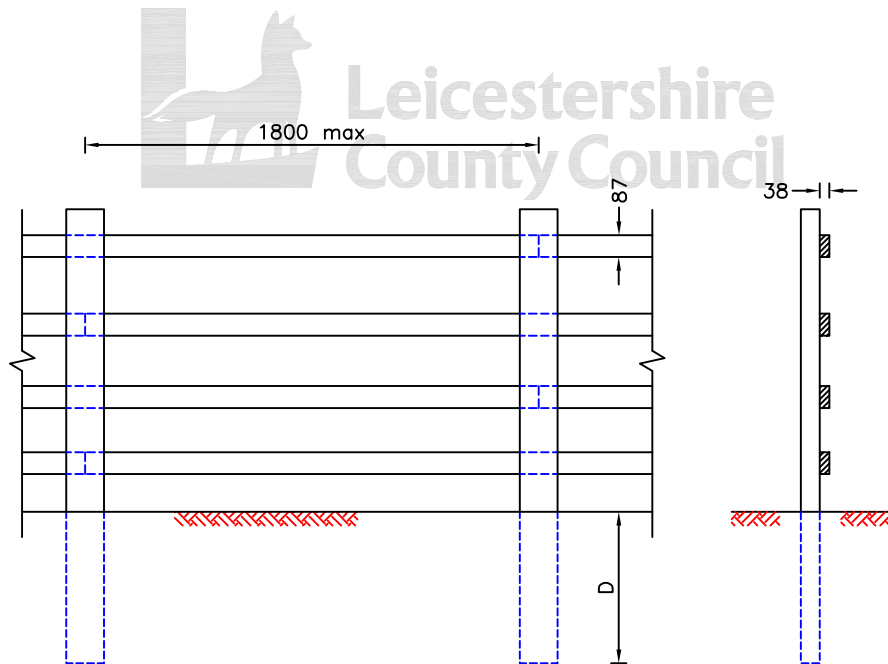
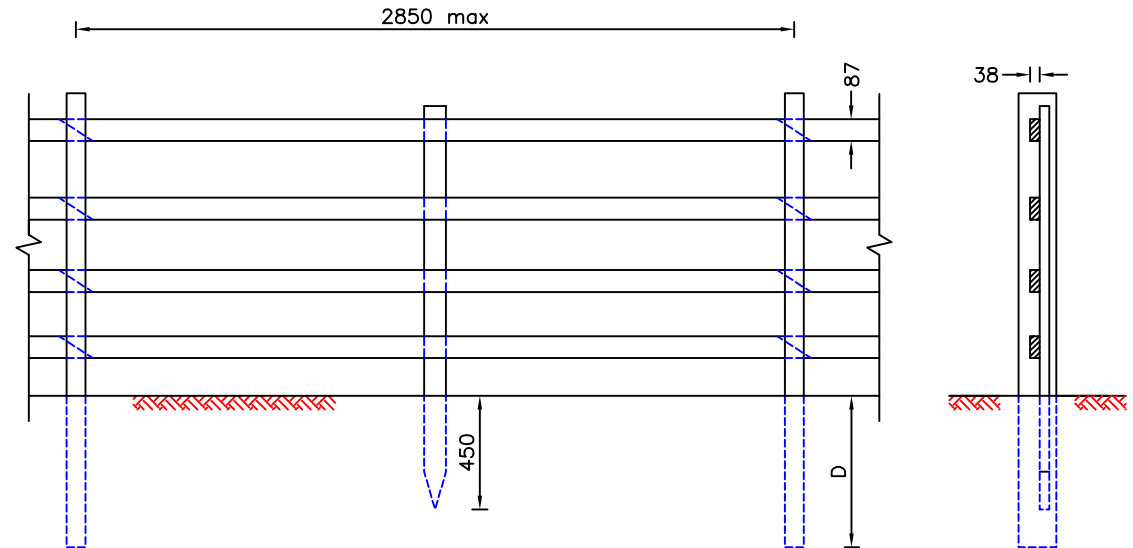


NOTES:  
1. For Notes see Drg No **SD/3/16A**



TYPICAL CONSTRUCTION DETAILS – NAILED POST AND FOUR RAIL FENCING  
TYPE ILLUSTRATED BS REF SPR 11/4

| BS REF   | POST DETAILS<br>LENGTH SECTION | NUMBER<br>OF RAILS | HEIGHT TO<br>TOP OF<br>TOP RAIL | SPACING<br>BETWEEN RAILS<br>(FROM TOP) | VALUE<br>OF D |
|----------|--------------------------------|--------------------|---------------------------------|--|---------------|
| SPR 11/4 | 1800 75 x 150                  | 4                  | 1100                            | 225-200-175-150                        | 600           |
| SPR 13/4 | 2100 75 x 150                  | 4                  | 1300                            | 250-250-225-225                        | 700           |



TYPICAL CONSTRUCTION DETAILS – MORTICED POST AND FOUR RAIL FENCING  
TYPE ILLUSTRATED BS REF MPR 11/4

| BS REF   | MAIN POSTS<br>LENGTH SECTION | PRICK POSTS<br>LENGTH SECTION | NUMBER<br>OF RAILS | HEIGHT TO<br>TOP OF<br>TOP RAIL | SPACING<br>BETWEEN RAILS<br>(FROM TOP) | VALUE<br>OF D |
|----------|------------------------------|-------------------------------|--------------------|---------------------------------|--|---------------|
| MPR 11/4 | 1800 75 x 150                | 1600 38 x 87                  | 4                  | 1100                            | 225-200-175-150                        | 600           |
| MPR 13/4 | 2100 75 x 150                | 1800 38 x 87                  | 4                  | 1300                            | 250-250-225-225                        | 700           |

©Crown copyright 2007. All rights reserved. Use of this image is limited to viewing on-line and printing one copy. Leicestershire County Council. 100619271.