

TYPICAL DETAILS PRECAST CONCRETE CATCHPIT TO BS 5911

NOTES:
1. For Notes see Drg No **SD/5/16**

DEEP CATCHPIT

Depth to top of base slab 3.0m – 6.0m

SHALLOW CATCHPIT

Depth to top of base slab 1.2m – 3.0m
(see Note 9)

Maximum 4 courses, minimum 2 courses Class B engineering bricks. Mortar and bedding material as stated on Drg No **SD/5/18**

See Note 14

Cover slab, reducing slab and sections bedded and jointed in Class 1 mortar to Clause 2404

Galvanised ladder (BS 4211) minimum distance from wall 150mm. Maximum 675mm from cover level to first ladder rung (see Notes 13 & 17)

End of pipes to be neatly built into wall and finished flush with Class 1 mortar to Clause 2404

At least 2 stays to be provided for ladder. Maximum spacing of stays 3m.

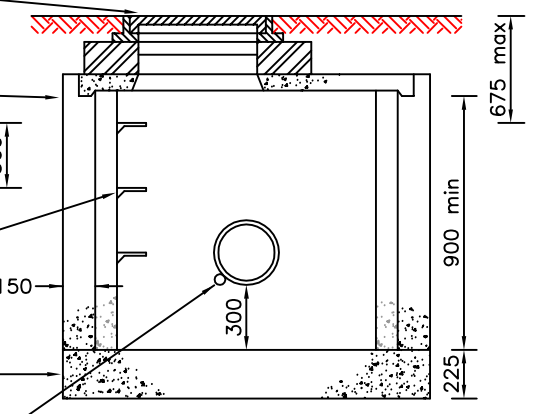
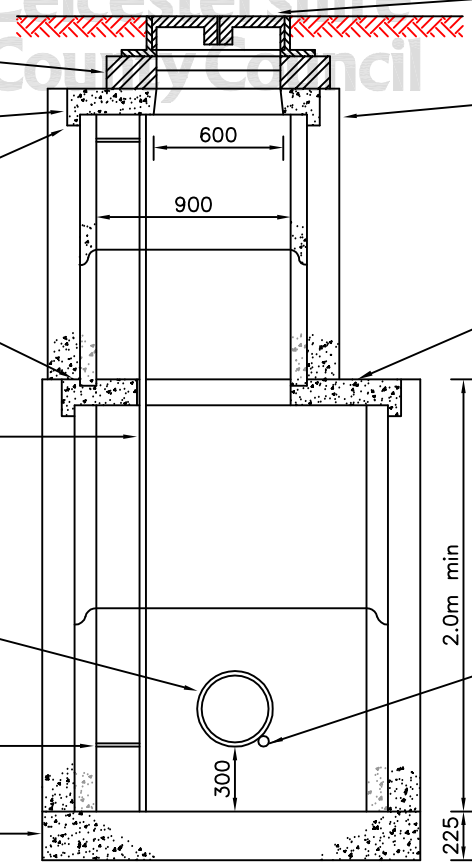
Base slab in GEN3 (16/20) concrete

Manhole cover and frame bedded on mortar in accordance with Drg No **SD/5/18**

150 surround in GEN3 (16/20) concrete

Galvanised step irons to BS 1247 staggered at 300 c/c

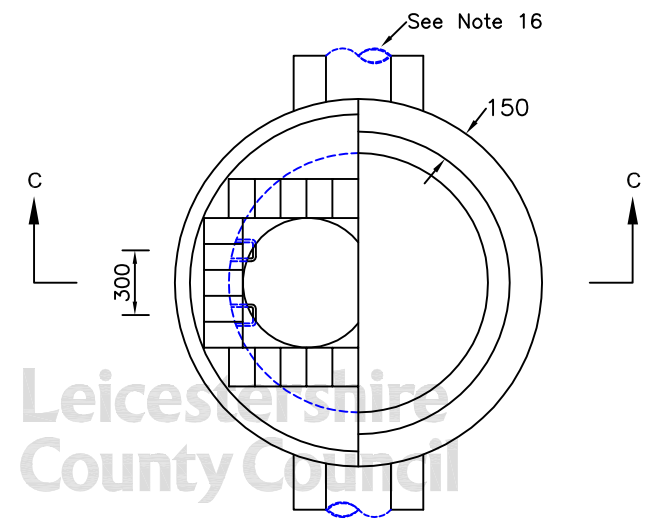
Base slab in GEN3 (16/20) concrete



SECTION C-C

Weep hole (see Note 10)

See Note 16



PLAN

TABLE 1

OUTLET PIPE DIA (mm)	CHAMBER DIA (mm)
100 – 300	1200
375 – 450	1350
525 – 600	1500

©Crown copyright 2007. All rights reserved. Use of this image is limited to viewing on-line and printing one copy. Leicestershire County Council. 100019271.